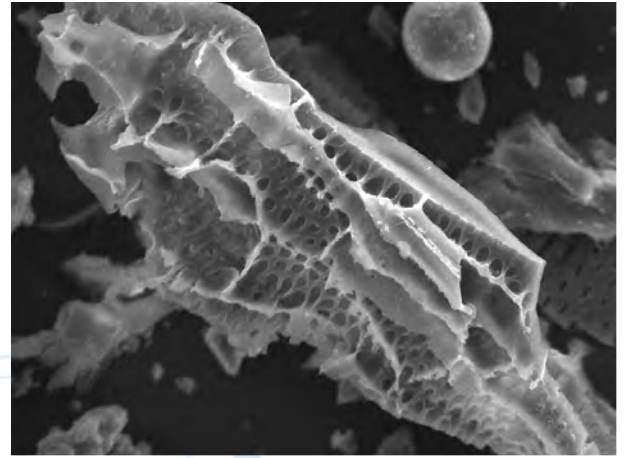
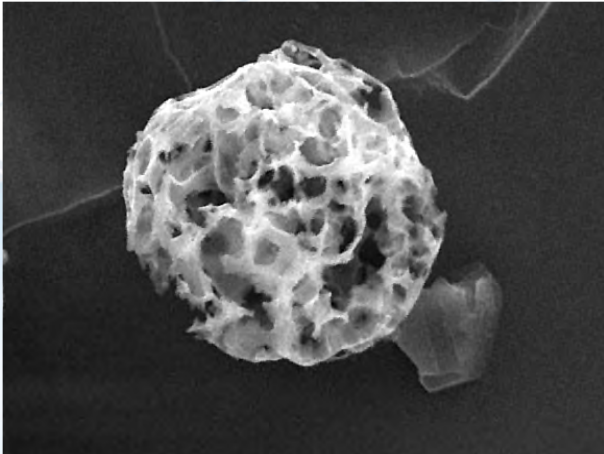


SOOT ANALYSIS

One of the most obvious forms of particle buildup in a home or business is caused by the deposition of dark, or black particles. These dark deposits are often a cause of concern. Dark deposits can contain soots or other combustion products that have built up in a home. Soots can come from several sources. Industrial soots such as those from power plants or large buildings may be infiltrating the environment. Alternately, soots created by a building's heating system might be recirculated. MicroVision Laboratories' comprehensive soot analysis allows for the detection of soot particulate via a combination of microscopy techniques.



Vegetative Char



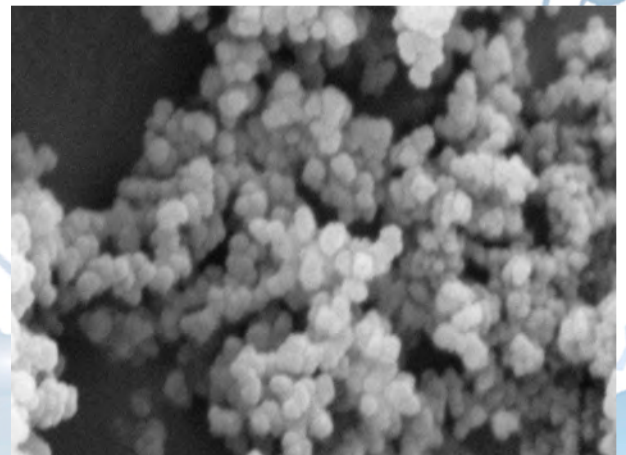
Industrial Oil Soot

Advantages:

- Fine soots from gas fires can be imaged and detected in clusters under a half micron in size
- Oil soots, fly ash, and coal ash particles can be identified and differentiated from typical home heating soots
- Wood or vegetative char from accidental fire, wood stoves or biomass combustion can be identified easily
- A comprehensive analysis of other particles in the sample can show other sources of particles
- Other dark particles, such as metallic oxides, paints, mold, and other fine particles can be differentiated from soots, and allow for other problems to be identified

Application Fields:

- Indoor Air Quality Applications
- Environmental Testing
- Industrial Consulting/Hygiene Applications
- Home Inspections
- Insurance Claims/Adjustment Analysis
- Home/Business Owners



Natural Gas Soots

Learn more at <http://www.MicroVisionLabs.com>