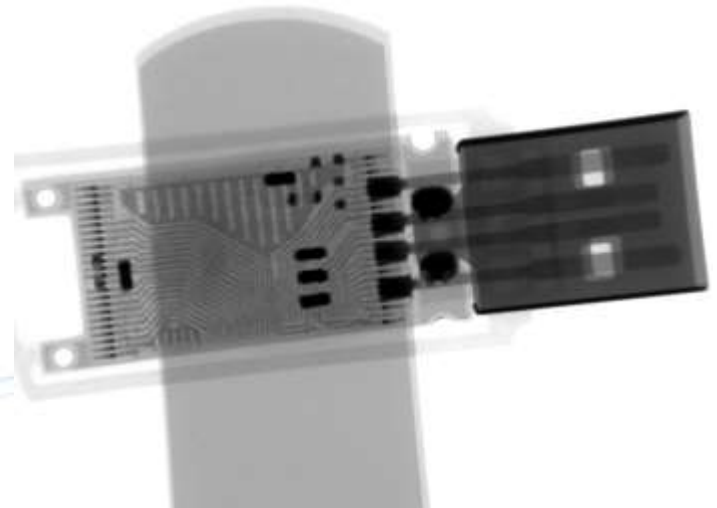


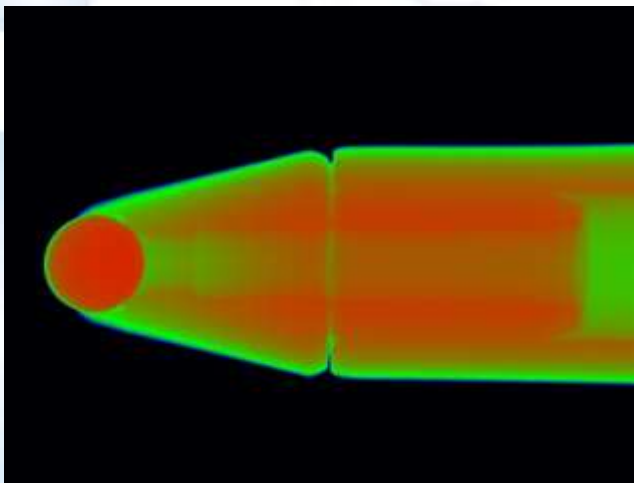
Industrial X-Ray Imaging

Real time 2-dimensional x-ray imaging is an extremely powerful method for inspecting industrial samples. This non-destructive imaging technique allows us to look through the packaging of a wide variety of samples (e.g. integrated circuits, electronic devices, medical implants, cables, etc.) and image the internal components within.

Our 160kV cabinet system has a motorized stage that can receive and manipulate large samples (e.g. ~20 in. by 20 in., ~3 ft. by 8 in.) in the X and Y axes. Smaller samples can also be tilted and rotated on axis allowing for live adjustments of the sample until the desired view is shown. When fully zoomed out images can be taken covering an area on the sample of ~ 2 inches wide by 2 inches. When fully zoomed in 15um bond wires can easily be resolved.



USB Flash Drive



Ball Point Pen

Advantages:

- Nondestructive Analysis (NDA)
- Defects can be quickly located and documented
- Real-time viewing of samples
- Product screening to detect contamination or foreign materials (FOD)
- High-resolution imaging
- Multiple software imaging options such as pseudo colored images

Applications:

- Electronics/Device Manufacturing
- Purchasing and Equipment Validation
- Medical Devices
- Computer Manufacturing
- Failure Analysis
- Quality Control



GE Phoenix Package Analyser